

Implant Summary Report for:

DePuy

Attune CR and Attune PS

Comprising PRIMARY knees implanted up to:	13 June 2020
NJR Database extract:	12 August 2020
Produced on:	25 August 2020
Licensed for use until:	25 August 2021

Contents

Recorded Usage in NJR	2
Patient and Procedure Details	3
Revision and Survivorship	4
Patient Reported Outcomes	11
APPENDICES – Component Lists	16

This report has been produced by the National Joint Registry of England, Wales and Northern Ireland (NJR). It summarises usage and outcomes associated with the Attune CR and Attune PS up to the specified dates. This analysis is based on data collected by the NJR and PROMs data collected by NHS Digital for the components listed in the appendices.

This report is made available to DePuy under licence. Under this licence, DePuy is free to distribute this document, subject to the restrictions specified in the National Joint Registry Supplier Feedback Data Access and Use Code of Practice.

NJR Recorded Usage

Implant Usage

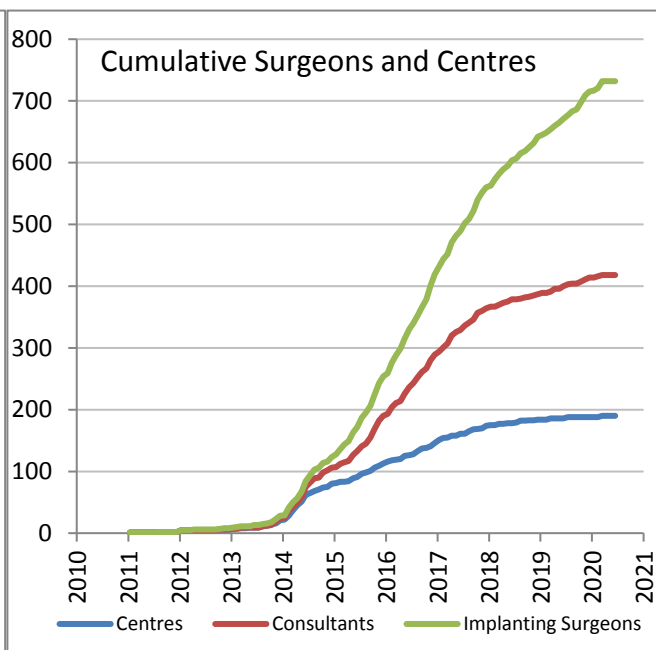
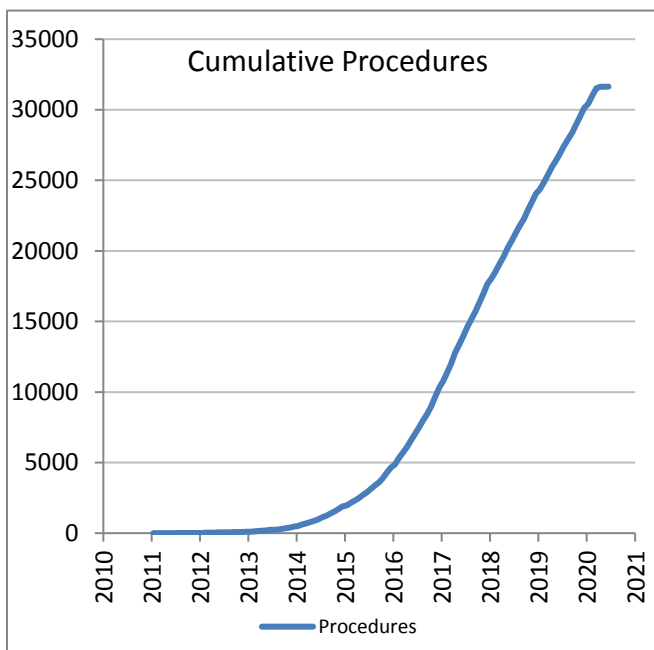
Date of first recorded usage in the NJR: **13 March 2010**

Date of last recorded usage in this dataset: **09 June 2020**

Maximum implantation time: 10.3 years

Mean implantation time: 2.7 years

Totals Recorded in NJR	Cumulative Total
Procedures	31,641
Patients	28,191
Centres	190
Consultants	418
Implanting Surgeons	732



Current Outcome	Year of implantation														Total	%
	Pre-2009	2009	2010	2011	2012	2013	2014	2015	2016	2017	2018	2019	2020			
Death	0	0	0	0	14	35	110	136	200	157	90	24	0	766	2.4%	
Revised	0	0	0	0	4	8	45	60	127	95	50	9	0	398	1.3%	
Unrevised	0	0	1	5	78	331	1296	2630	5455	7075	6181	6055	1370	30477	96.3%	
Total	0	0	1	5	96	374	1451	2826	5782	7327	6321	6088	1370	31641	100%	

Patient / Procedure Details

Patient Details

	Attune CR and Attune PS	All other TKR in NJR
Total Procedures	31,641	1,153,416
Total Patients	28,191	934,035
Demographics		
Mean age	69.2	70.2
< 50	2.2%	1.7%
50 – 59	14.3%	11.3%
60 – 69	31.9%	32.1%
70 – 79	36.9%	38.8%
≥ 80	14.7%	16.0%
Median BMI	30	30
% BMI information available	77.4%	64.1%
Underweight (BMI < 18.5)	0.2%	0.2%
Normal (18.5 ≤ BMI < 25)	10.6%	10.0%
Overweight (25 ≤ BMI < 30)	35.2%	34.0%
Obese I (30 ≤ BMI < 35)	31.8%	32.5%
Obese II (35 ≤ BMI < 40)	15.4%	16.4%
Obese III (BMI ≥ 40)	6.7%	6.9%
% Male	43.4%	42.7%
ASA Grades		
P1 - Fit and healthy	9.2%	10.3%
P2 - Mild disease not incapacitating	74.7%	72.3%
P3 - Incapacitating systemic disease	15.9%	17.0%
P4 / P5	0.2%	0.3%
Indications		
Osteoarthritis	97.70%	97.37%
Rheumatoid Arthritis	1.00%	1.56%
Other Inflammatory Arthropathy	0.84%	0.68%
Previous Trauma	0.68%	0.58%
Avascular Necrosis	0.41%	0.34%
Other	0.22%	0.34%

Total of indications may exceed total number of implants, since more than one indication can be listed per case.

Revision and Survivorship

Reasons for Revision

Reasons for revision of primary procedures in which the implant was used.

Reason for Revision	Revised †	Expected Revisions *	p value
Infection	104	124.53	0.064
Progressive Arthritis Remaining	52	36.97	0.016
Aseptic Loosening Femur	8	14.46	0.111
Aseptic Loosening Tibia	64	44.51	0.005
Aseptic Loosening Patella	13	8.75	0.169
Unexplained Pain	49	39.46	0.128
Stiffness	47	36.89	0.096
Malalignment	19	30.06	0.043
Instability	54	61.55	0.369
Dislocation / Subluxation	9	10.04	0.874
Periprosthetic Fracture	11	13.41	0.679
Wear of Polyethylene Component	5	4.16	0.617
Lysis - Tibia	4	8.89	0.126
Lysis - Femur	0	4.45	0.027
Component Dissociation	1	2.11	0.729
Implant Fracture	1	2.21	0.73
Other / Not recorded	31	24.62	0.187
Total Revised	398	375.14	0.232

† multiple reasons may be listed for one revision procedure

* Based on All TKR in NJR, adjusted for agegroup, gender, indications and implantation year

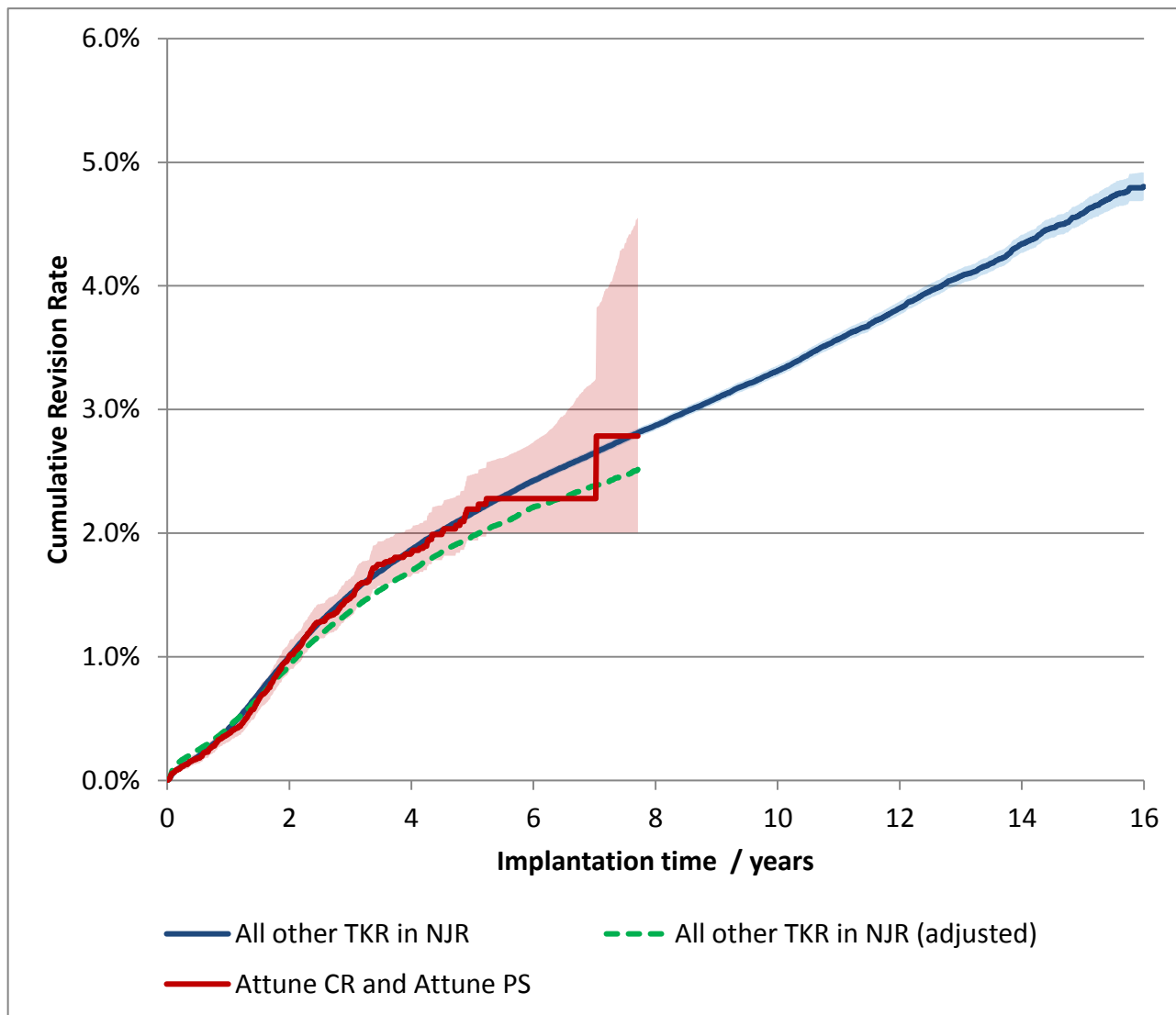
Significantly better, $p < 0.001$ Significantly better, $p < 0.05$ Significantly worse $p < 0.05$ Significantly worse $p < 0.001$ 

Components Revised	Number of procedures	Attune CR and Attune PS	All other TKR in NJR
Femoral and/or Tibial Revision	196	49.2%	68.7%
Isolated bearing exchange	107	26.9%	13.6%
Patella revision / resurfacing only	94	23.6%	16.6%
No component revision recorded	1	0.3%	1.1%

Revision and Survivorship

Cumulative Revision Rate

Endpoint: All reasons for revision



Cox Proportional Hazards model for revision risk ratio of Attune CR and Attune PS / All other TKR in NJR, with endpoint as any revision.

Adjustment	Hazard Ratio (95% CI)	p-value
Unadjusted.	0.98 (0.89 - 1.09)	0.748
Adjusted for age, gender, year cohort and indications.	1.06 (0.96 - 1.18)	0.224

Revision and Survivorship

Cumulative Revision Rate

Endpoint: All revisions

Period /years	At Risk	Attune CR and Attune PS	All other TKR in NJR
0	31641	-	-
1	26660	0.4% (0.3% - 0.4%)	0.4% (0.4% - 0.4%)
2	20203	1.0% (0.9% - 1.1%)	1.0% (1.0% - 1.0%)
3	13418	1.5% (1.3% - 1.6%)	1.5% (1.5% - 1.5%)
4	6608	1.8% (1.7% - 2.0%)	1.9% (1.8% - 1.9%)
5	2637	2.2% (1.9% - 2.5%)	2.2% (2.1% - 2.2%)
6	881	2.3% (2.0% - 2.7%)	2.4% (2.4% - 2.5%)
7	202	2.3% (2.0% - 3.2%)	2.6% (2.6% - 2.7%)
8		(-)	2.9% (2.8% - 2.9%)
9		(-)	3.1% (3.1% - 3.1%)
10		(-)	3.3% (3.3% - 3.4%)
11		(-)	3.6% (3.5% - 3.6%)
12		(-)	3.8% (3.8% - 3.9%)
13		(-)	4.1% (4.0% - 4.1%)
14		(-)	4.3% (4.3% - 4.4%)
15		(-)	4.6% (4.5% - 4.7%)

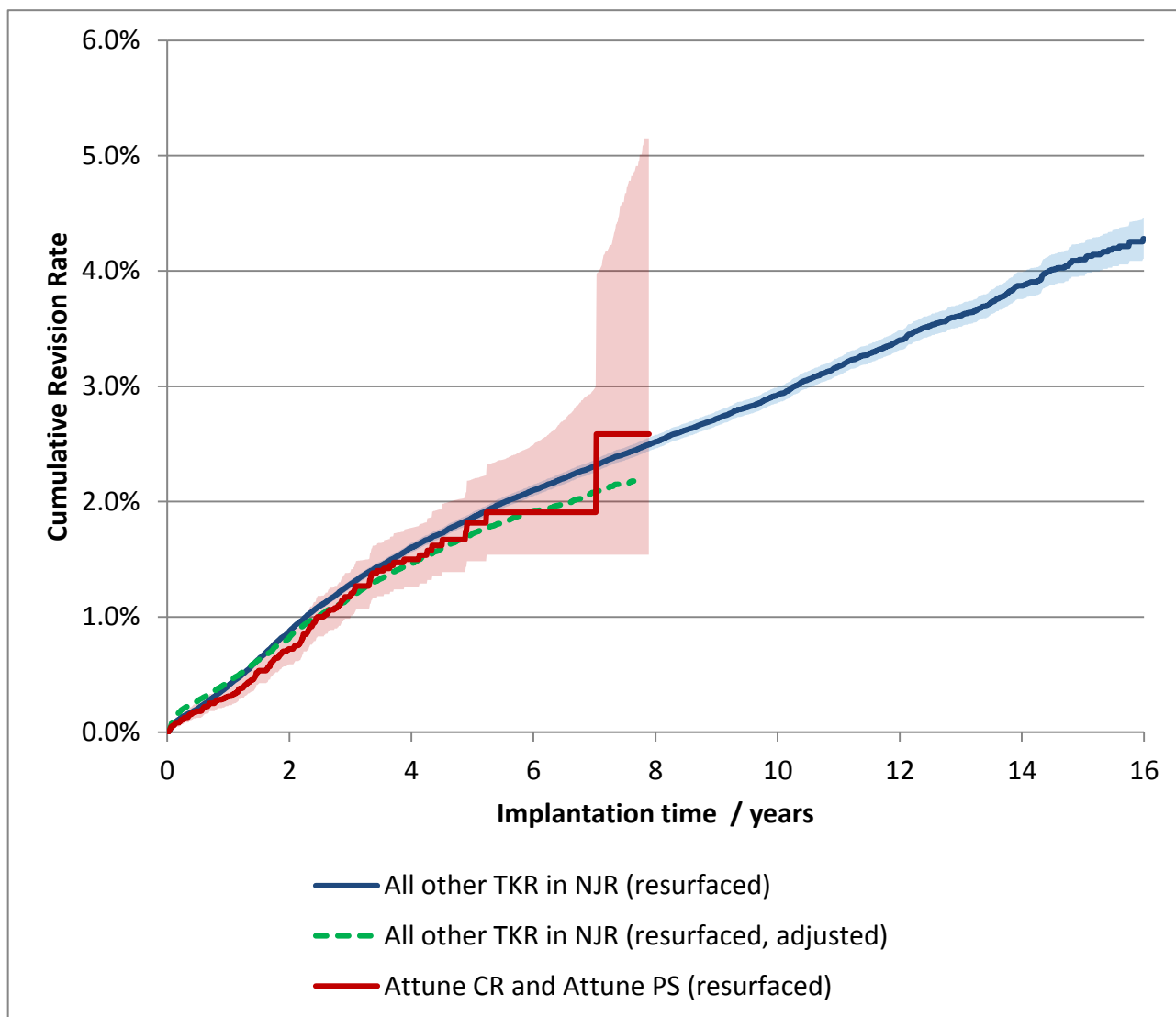
Cumulative revision rate with 95% confidence intervals

Rate is only reported for times where more than 40 remain at risk

Revision and Survivorship

Cumulative Revision Rate

Patella: Resurfaced



Cox Proportional Hazards model for revision risk ratio of Attune CR and Attune PS (resurfaced) / All other TKR in NJR (resurfaced), with endpoint as any revision.

Adjustment	Hazard Ratio (95% CI)	p-value
Unadjusted.	0.91 (0.78 - 1.07)	0.266
Adjusted for age, gender, year cohort and indications.	0.97 (0.83 - 1.15)	0.745

Revision and Survivorship

Cumulative Revision Rate

Patella: Resurfaced

Period /years	At Risk	Attune CR and Attune PS (resurfaced)	All other TKR in NJR (resurfaced)
0	15569	-	-
1	13012	0.3% (0.2% - 0.4%)	0.4% (0.4% - 0.4%)
2	9870	0.7% (0.6% - 0.9%)	0.9% (0.8% - 0.9%)
3	6528	1.2% (1.0% - 1.4%)	1.3% (1.2% - 1.3%)
4	3049	1.5% (1.3% - 1.8%)	1.6% (1.6% - 1.6%)
5	1259	1.8% (1.5% - 2.2%)	1.9% (1.8% - 1.9%)
6	506	1.9% (1.5% - 2.5%)	2.1% (2.0% - 2.1%)
7	152	1.9% (1.5% - 3.0%)	2.3% (2.3% - 2.4%)
8		(-)	2.5% (2.5% - 2.6%)
9		(-)	2.7% (2.7% - 2.8%)
10		(-)	2.9% (2.9% - 3.0%)
11		(-)	3.2% (3.1% - 3.3%)
12		(-)	3.4% (3.3% - 3.5%)
13		(-)	3.6% (3.5% - 3.7%)
14		(-)	3.9% (3.8% - 4.0%)
15		(-)	4.1% (4.0% - 4.2%)

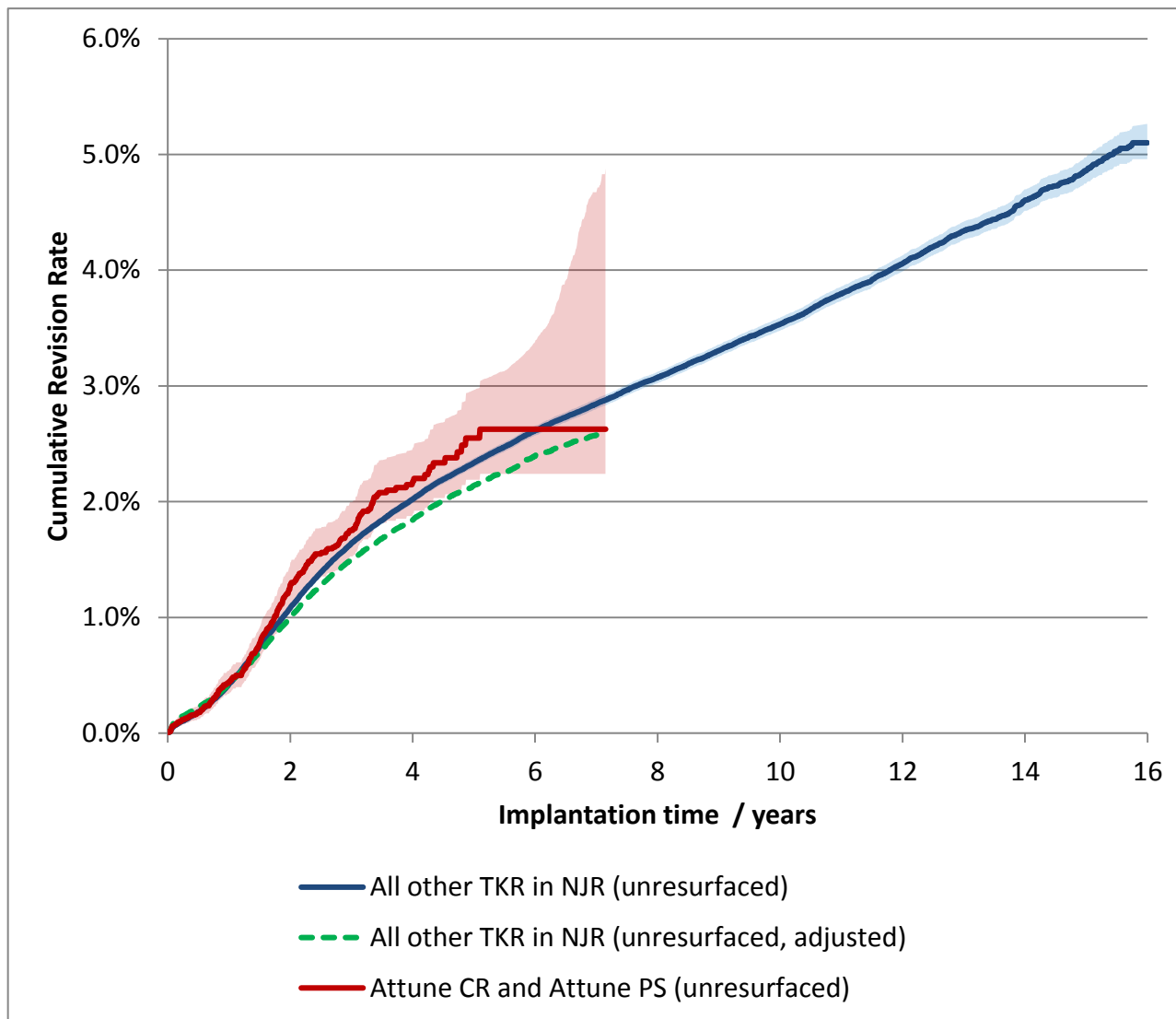
Cumulative revision rate with 95% confidence intervals

Rate is only reported for times where more than 40 remain at risk

Revision and Survivorship

Cumulative Revision Rate

Patella: Unresurfaced



Cox Proportional Hazards model for revision risk ratio of Attune CR and Attune PS (unresurfaced) / All other TKR in NJR (unresurfaced), with endpoint as any revision.

Adjustment	Hazard Ratio (95% CI)	p-value
Unadjusted.	1.08 (0.95 - 1.23)	0.225
Adjusted for age, gender, year cohort and indications.	1.16 (1.02 - 1.33)	0.022

Revision and Survivorship

Cumulative Revision Rate

Patella: Unresurfaced

Period /years	At Risk	Attune CR and Attune PS (unresurfaced)	All other TKR in NJR (unresurfaced)
0	16072	-	-
1	13648	0.4% (0.3% - 0.5%)	0.4% (0.4% - 0.4%)
2	10333	1.3% (1.1% - 1.5%)	1.1% (1.1% - 1.1%)
3	6890	1.8% (1.5% - 2.0%)	1.6% (1.6% - 1.7%)
4	3559	2.2% (1.9% - 2.5%)	2.0% (2.0% - 2.1%)
5	1378	2.5% (2.2% - 3.0%)	2.3% (2.3% - 2.4%)
6	375	2.6% (2.2% - 3.4%)	2.6% (2.6% - 2.7%)
7	50	2.6% (2.2% - 4.7%)	2.8% (2.8% - 2.9%)
8		(-)	3.1% (3.0% - 3.1%)
9		(-)	3.3% (3.3% - 3.4%)
10		(-)	3.5% (3.5% - 3.6%)
11		(-)	3.8% (3.7% - 3.9%)
12		(-)	4.1% (4.0% - 4.1%)
13		(-)	4.3% (4.3% - 4.4%)
14		(-)	4.6% (4.5% - 4.7%)
15		(-)	4.9% (4.7% - 5.0%)

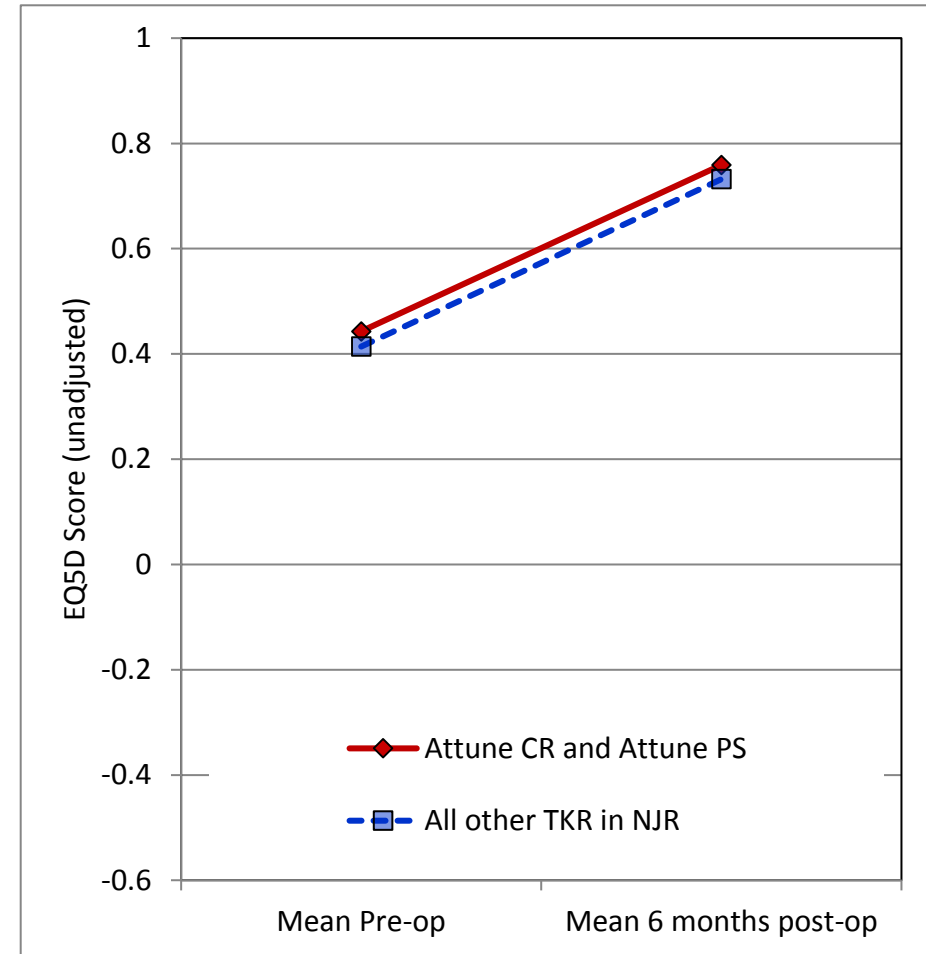
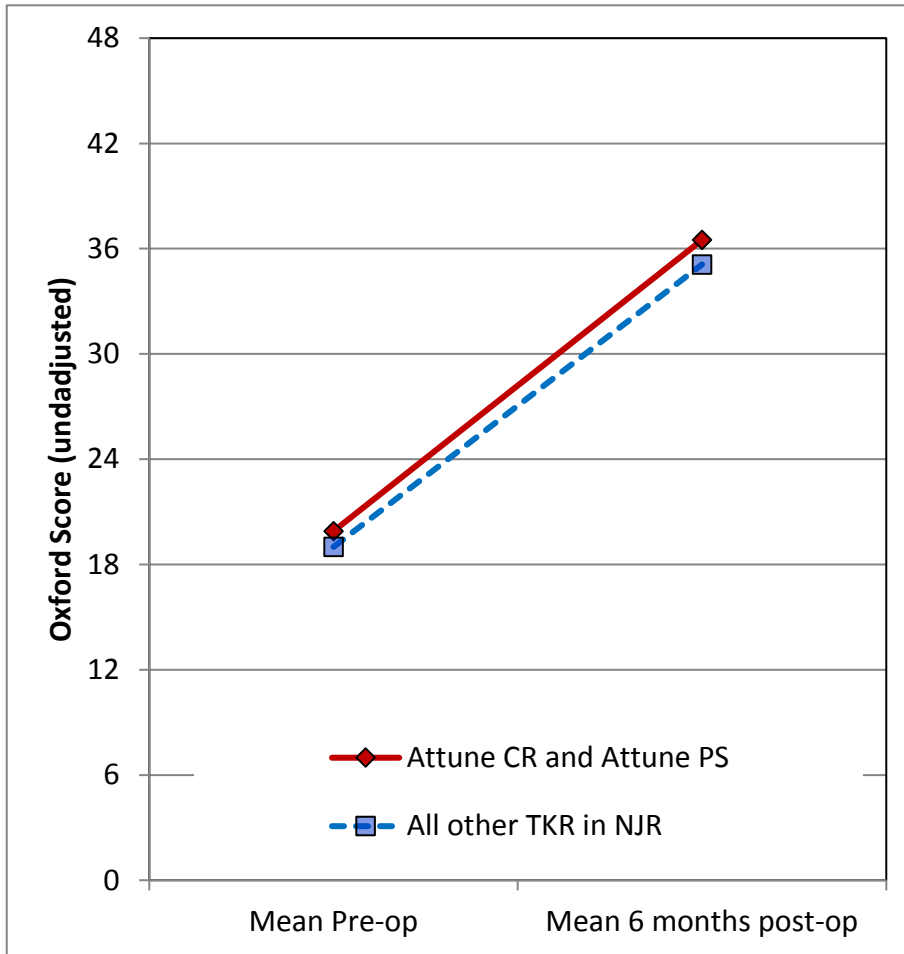
Cumulative revision rate with 95% confidence intervals

Rate is only reported for times where more than 40 remain at risk

PROMs Analysis

Patient Reported Outcomes

Comprising PROMs data up to and including: 19/05/2018



Patient Reported Outcomes

PROMs Analysis

Comprising PROMs data up to and including: 19/05/2018

Oxford Knee Score (0 - 48)	Attune CR and Attune PS	All other TKR in NJR	All Knees in NJR
Paired Records	7,311	297,983	314,532
PreOp score	19.9 (19.7 - 20.0)	19.0 (19.0 - 19.0)	19.1 (19.0 - 19.1)
6 month score	36.5 (36.3 - 36.7)	35.1 (35.1 - 35.1)	35.2 (35.1 - 35.2)
6 month score (adjusted)	35.9 (35.7 - 36.1)	35.1 (35.1 - 35.2)	35.2 (35.1 - 35.2)
Health gain	16.7 (16.4 - 16.9)	16.1 (16.1 - 16.1)	16.1 (16.1 - 16.1)
Health gain (adjusted)	16.8 (16.7 - 17.0)	16.1 (16.0 - 16.1)	16.1 (16.1 - 16.1)
p value (adjusted health gain)	< 0.001		
Score Improved	94.4%	93.6%	93.6%

EQ-5D Index (-0.59 - 1.00)	Attune CR and Attune PS	All other TKR in NJR	All Knees in NJR
Paired Records	6,833	275,339	290,760
PreOp score	0.443 (0.436 - 0.451)	0.414 (0.413 - 0.415)	0.416 (0.414 - 0.417)
6 month score	0.759 (0.753 - 0.764)	0.732 (0.731 - 0.733)	0.733 (0.732 - 0.734)
6 month score (adjusted)	0.744 (0.739 - 0.749)	0.733 (0.732 - 0.734)	0.733 (0.732 - 0.734)
Health gain	0.315 (0.307 - 0.323)	0.318 (0.317 - 0.319)	0.318 (0.316 - 0.319)
Health gain (adjusted)	0.328 (0.323 - 0.333)	0.317 (0.316 - 0.318)	0.318 (0.317 - 0.318)
p value (adjusted health gain)	< 0.001		
Score Improved	80.9%	80.9%	80.9%

EQ-VAS (0 - 100)	Attune CR and Attune PS	All other TKR in NJR	All Knees in NJR
Paired Records	6,537	262,705	277,616
PreOp score	68.0 (67.5 - 68.5)	68.0 (67.9 - 68.1)	68.0 (67.9 - 68.1)
6 month score	75.7 (75.3 - 76.1)	73.6 (73.6 - 73.7)	73.7 (73.6 - 73.8)
6 month score (adjusted)	74.8 (74.4 - 75.2)	73.7 (73.6 - 73.7)	73.7 (73.6 - 73.8)
Health gain	7.7 (7.1 - 8.2)	5.6 (5.5 - 5.7)	5.7 (5.6 - 5.8)
Health gain (adjusted)	6.8 (6.4 - 7.2)	5.7 (5.6 - 5.7)	5.7 (5.6 - 5.8)
p value (adjusted health gain)	< 0.001		
Score Improved	59.4%	55.3%	55.4%

Adjusted scores correspond to the NHS Digital version 3 casemix-adjustment model. This includes patient variables from PROMs, HES, and IMD data.

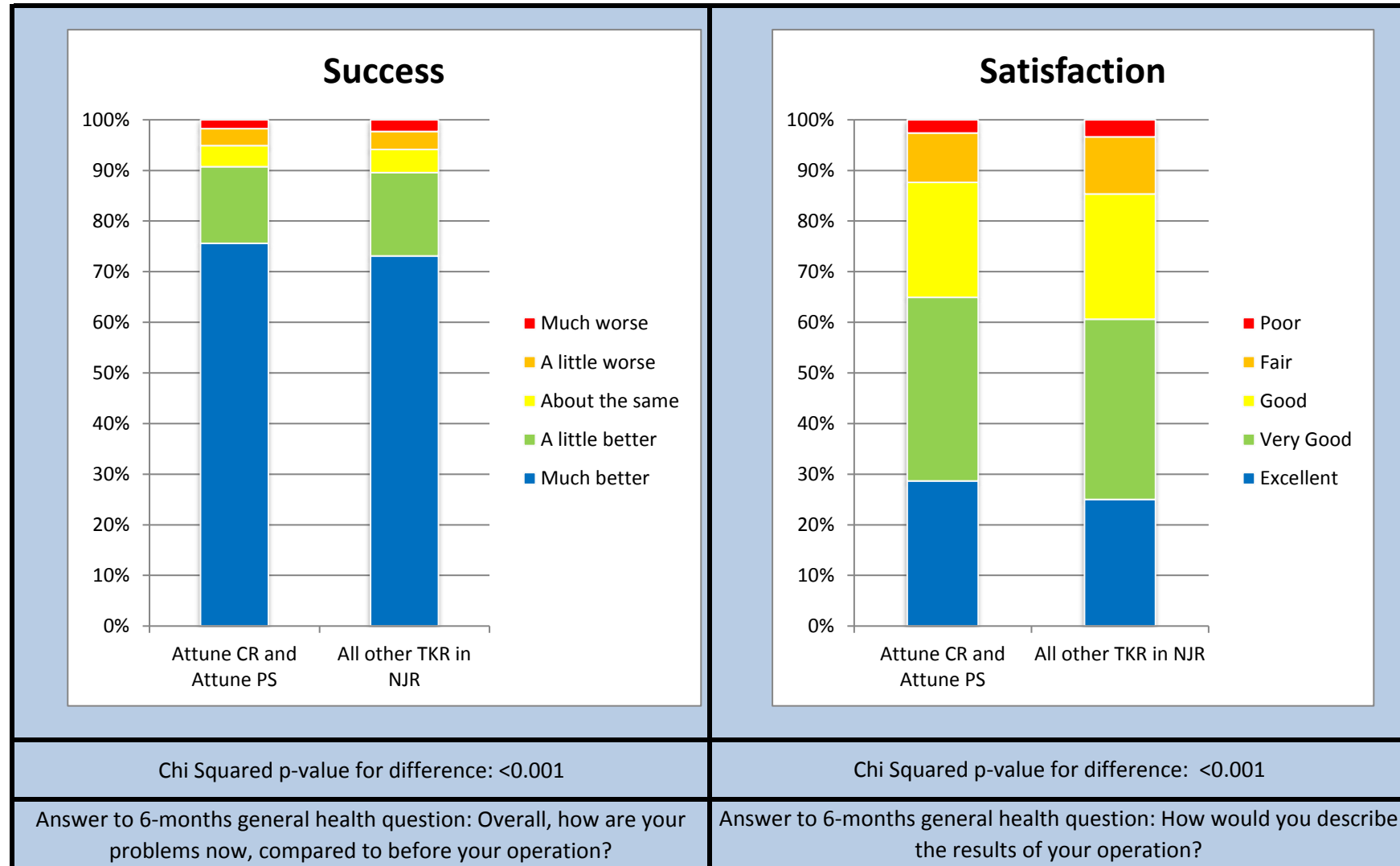
Figures in parentheses represent the 95% confidence interval for the mean

Summary Report for:

Attune CR and Attune PS

Responses are not case mix adjusted

Patient Reported Outcomes



Chi Squared p-value for difference: <0.001

Chi Squared p-value for difference: <0.001

Answer to 6-months general health question: Overall, how are your problems now, compared to before your operation?

Answer to 6-months general health question: How would you describe the results of your operation?

Patient Reported Outcomes

Success

Response	Attune CR and Attune PS	All other TKR in NJR
Much better	5705	223911
A little better	1143	50357
About the same	314	14102
A little worse	253	10772
Much worse	131	7125

Answer to 6-months general health question:

"Overall, how are your problems now, compared to before your operation?"

Satisfaction

Response	Attune CR and Attune PS	All other TKR in NJR
Excellent	2160	76353
Very Good	2735	108915
Good	1712	75571
Fair	735	34457
Poor	195	10265

Answer to 6-months general health question:

"How would you describe the results of your operation?"

Disclaimer

Disclaimer

The National Joint Registry (NJR) produces this report through its contractor, Northgate Public Services (UK) Limited (NPS), using data collected, collated and provided by third parties. As a result, neither NJR or NPS takes any responsibility for the accuracy, currency, reliability and correctness of any data used or referred to in this report, and disclaims all warranties in relation to such data, in each case to the maximum extent permitted by legislation.

To the maximum extent permitted by law, neither the NJR or NPS shall have any liability (including but not limited to liability by reason of negligence) for any loss, damage, cost or expense incurred or arising by reason of any person using or relying on the data within this report and whether caused by reason of any error, omission or misrepresentation in the report or otherwise. This report is not to be taken as advice. Third parties using or relying on the data in this report do so at their own risk and will be responsible for making their own assessment and should verify all relevant representations, statements and information with their own professional advisers.

Appendix A1: Femoral Components

Catalogue Number	Description	Number Implanted
150400102	Attune CR Cemented Femoral Size 2 Left	18
150400103	Attune CR Cemented Femoral Size 3 Left	300
150400104	Attune CR Cemented Femoral Size 4 Left	1094
150400105	Attune CR Cemented Femoral Size 5 Left	1763
150400106	Attune CR Cemented Femoral Size 6 Left	1686
150400107	Attune CR Cemented Femoral Size 7 Left	1893
150400108	Attune CR Cemented Femoral Size 8 Left	1163
150400109	Attune CR Cemented Femoral Size 9 Left	294
150400110	Attune CR Cemented Femoral Size 10 Left	43
150400123	Attune CR Cemented Femoral Size 3 Narrow Left	36
150400124	Attune CR Cemented Femoral Size 4 Narrow Left	227
150400125	Attune CR Cemented Femoral Size 5 Narrow Left	647
150400126	Attune CR Cemented Femoral Size 6 Narrow Left	656
150400201	Attune CR Cemented Femoral Size 1 Right	3
150400202	Attune CR Cemented Femoral Size 2 Right	22
150400203	Attune CR Cemented Femoral Size 3 Right	303
150400204	Attune CR Cemented Femoral Size 4 Right	1170
150400205	Attune CR Cemented Femoral Size 5 Right	1945
150400206	Attune CR Cemented Femoral Size 6 Right	1923
150400207	Attune CR Cemented Femoral Size 7 Right	2080
150400208	Attune CR Cemented Femoral Size 8 Right	1384
150400209	Attune CR Cemented Femoral Size 9 Right	286
150400210	Attune CR Cemented Femoral Size 10 Right	46
150400223	Attune CR Cemented Femoral Size 3 Narrow Right	29
150400224	Attune CR Cemented Femoral Size 4 Narrow Right	252
150400225	Attune CR Cemented Femoral Size 5 Narrow Right	657
150400226	Attune CR Cemented Femoral Size 6 Narrow Right	736
150401105	ATTUNE CR FEM LT SZ 5 POR	4
150401106	ATTUNE CR FEM LT SZ 6 POR	15
150401107	ATTUNE CR FEM LT SZ 7 POR	15
150401108	ATTUNE CR FEM LT SZ 8 POR	11
150401109	ATTUNE CR FEM LT SZ 9 POR	4
150401110	ATTUNE CR FEM LT SZ 10 POR	1
150401123	ATTUNE CR FEM LT SZ 3N POR	1
150401124	ATTUNE CR FEM LT SZ 4N POR	2
150401125	ATTUNE CR FEM LT SZ 5N POR	3
150401126	ATTUNE CR FEM LT SZ 6N POR	8
150401204	ATTUNE CR FEM RT SZ 4 POR	1
150401205	ATTUNE CR FEM RT SZ 5 POR	3
150401206	ATTUNE CR FEM RT SZ 6 POR	5
150401207	ATTUNE CR FEM RT SZ 7 POR	19
150401208	ATTUNE CR FEM RT SZ 8 POR	13
150401209	ATTUNE CR FEM RT SZ 9 POR	3
150401210	ATTUNE CR FEM RT SZ 10 POR	1
150401224	ATTUNE CR FEM RT SZ 4N POR	3
150401225	ATTUNE CR FEM RT SZ 5N POR	5

Appendix A1: Femoral Components

Catalogue Number	Description	Number Implanted
150401226	ATTUNE CR FEM RT SZ 6N POR	7
150410101	Attune PS Cemented Femoral Size 1 Left	1
150410102	Attune PS Cemented Femoral Size 2 Left	7
150410103	Attune PS Cemented Femoral Size 3 Left	167
150410104	Attune PS Cemented Femoral Size 4 Left	569
150410105	Attune PS Cemented Femoral Size 5 Left	904
150410106	Attune PS Cemented Femoral Size 6 Left	850
150410107	Attune PS Cemented Femoral Size 7 Left	964
150410108	Attune PS Cemented Femoral Size 8 Left	598
150410109	Attune PS Cemented Femoral Size 9 Left	121
150410110	Attune PS Cemented Femoral Size 10 Left	28
150410123	Attune PS Cemented Femoral Size 3 Narrow Left	24
150410124	Attune PS Cemented Femoral Size 4 Narrow Left	118
150410125	Attune PS Cemented Femoral Size 5 Narrow Left	374
150410126	Attune PS Cemented Femoral Size 6 Narrow Left	367
150410201	Attune PS Cemented Femoral Size 1 Right	2
150410202	Attune PS Cemented Femoral Size 2 Right	7
150410203	Attune PS Cemented Femoral Size 3 Right	206
150410204	Attune PS Cemented Femoral Size 4 Right	647
150410205	Attune PS Cemented Femoral Size 5 Right	962
150410206	Attune PS Cemented Femoral Size 6 Right	948
150410207	Attune PS Cemented Femoral Size 7 Right	1145
150410208	Attune PS Cemented Femoral Size 8 Right	655
150410209	Attune PS Cemented Femoral Size 9 Right	157
150410210	Attune PS Cemented Femoral Size 10 Right	35
150410223	Attune PS Cemented Femoral Size 3 Narrow Right	22
150410224	Attune PS Cemented Femoral Size 4 Narrow Right	141
150410225	Attune PS Cemented Femoral Size 5 Narrow Right	381
150410226	Attune PS Cemented Femoral Size 6 Narrow Right	425
150411104	ATTUNE PS FEM LT SZ 4 POR	1
150411106	ATTUNE PS FEM LT SZ 6 POR	3
150411107	ATTUNE PS FEM LT SZ 7 POR	5
150411108	ATTUNE PS FEM LT SZ 8 POR	2
150411109	ATTUNE PS FEM LT SZ 9 POR	1
150411110	ATTUNE PS FEM LT SZ 10 POR	1
150411125	ATTUNE PS FEM LT SZ 5N POR	1
150411204	ATTUNE PS FEM RT SZ 4 POR	1
150411205	ATTUNE PS FEM RT SZ 5 POR	1
150411206	ATTUNE PS FEM RT SZ 6 POR	4
150411207	ATTUNE PS FEM RT SZ 7 POR	6
150411208	ATTUNE PS FEM RT SZ 8 POR	4
150411209	ATTUNE PS FEM RT SZ 9 POR	3
150411225	ATTUNE PS FEM RT SZ 5N POR	1
150411226	ATTUNE PS FEM RT SZ 6N POR	2

Appendix A2: Tibial Components

Catalogue Number	Description	Number
150600001	Attune FB Cemented Tibial Base Size 1	17
150600002	Attune FB Cemented Tibial Base Size 2	108
150600003	Attune FB Cemented Tibial Base Size 3	1939
150600004	Attune FB Cemented Tibial Base Size 4	4901
150600005	Attune FB Cemented Tibial Base Size 5	5548
150600006	Attune FB Cemented Tibial Base Size 6	4181
150600007	Attune FB Cemented Tibial Base Size 7	4084
150600008	Attune FB Cemented Tibial Base Size 8	2944
150600009	Attune FB Cemented Tibial Base Size 9	663
150600010	Attune FB Cemented Tibial Base Size 10	139
150610001	Attune RP Cemented Tibial Base Size 1	1
150610002	Attune RP Cemented Tibial Base Size 2	1
150610003	Attune RP Cemented Tibial Base Size 3	228
150610004	Attune RP Cemented Tibial Base Size 4	685
150610005	Attune RP Cemented Tibial Base Size 5	788
150610006	Attune RP Cemented Tibial Base Size 6	583
150610007	Attune RP Cemented Tibial Base Size 7	619
150610008	Attune RP Cemented Tibial Base Size 8	478
150610009	Attune RP Cemented Tibial Base Size 9	90
150610010	Attune RP Cemented Tibial Base Size 10	22
150611003	ATTUNE RP TIB BASE SZ 3 POR	7
150611004	ATTUNE RP TIB BASE SZ 4 POR	17
150611005	ATTUNE RP TIB BASE SZ 5 POR	24
150611006	ATTUNE RP TIB BASE SZ 6 POR	31
150611007	ATTUNE RP TIB BASE SZ 7 POR	39
150611008	ATTUNE RP TIB BASE SZ 8 POR	28
150611009	ATTUNE RP TIB BASE SZ 9 POR	12
150611010	ATTUNE RP TIB BASE SZ 10 POR	1
150640003	Attune Revision FB Cemented Tibial Base Size 3	5
150640005	Attune Revision FB Cemented Tibial Base Size 5	6
150640006	Attune Revision FB Cemented Tibial Base Size 6	2
150640007	Attune Revision FB Cemented Tibial Base Size 7	4
150640008	Attune Revision FB Cemented Tibial Base Size 8	1
150660003	ATTUNE Revision Tibial Base Rotating Platform Size 3 Cemented	4
150660005	ATTUNE Revision Tibial Base Rotating Platform Size 5 Cemented	6
150660006	ATTUNE Revision Tibial Base Rotating Platform Size 6 Cemented	6
150660007	ATTUNE Revision Tibial Base Rotating Platform Size 7 Cemented	8
150660008	ATTUNE Revision Tibial Base Rotating Platform Size 8 Cemented	5
150670001	ATTUNE FB POCKET BASE SZ1 CEM	1
150670002	ATTUNE FB POCKET BASE SZ2 CEM	12
150670003	ATTUNE FB POCKET BASE SZ3 CEM	200
150670004	ATTUNE FB POCKET BASE SZ4 CEM	487
150670005	ATTUNE FB POCKET BASE SZ5 CEM	564
150670006	ATTUNE FB POCKET BASE SZ6 CEM	396
150670007	ATTUNE FB POCKET BASE SZ7 CEM	431
150670008	ATTUNE FB POCKET BASE SZ8 CEM	336

Appendix A2: Tibial Components

Catalogue Number	Description	Number
150670009	ATTUNE FB POCKET BASE SZ9 CEM	73
150670010	ATTUNE FB POCKET BASE SZ10 CEM	19
150680002	ATTUNE RP POCKET BASE SZ2 CEM	1
150680003	ATTUNE RP POCKET BASE SZ3 CEM	80
150680004	ATTUNE RP POCKET BASE SZ4 CEM	169
150680005	ATTUNE RP POCKET BASE SZ5 CEM	189
150680006	ATTUNE RP POCKET BASE SZ6 CEM	115
150680007	ATTUNE RP POCKET BASE SZ7 CEM	145
150680008	ATTUNE RP POCKET BASE SZ8 CEM	132
150680009	ATTUNE RP POCKET BASE SZ9 CEM	33
150680010	ATTUNE RP POCKET BASE SZ10 CEM	3
864182	PFC® STANDARD TIBIAL TRAY NON-POROUS SIZE 4	1

Appendix A3: Bearing Components

Catalogue Number	Description	Number
151620105	Attune CR FB Insert Size 1 5mm	1
151620106	Attune CR FB Insert Size 1 6mm	1
151620107	Attune CR FB Insert Size 1 7mm	1
151620205	Attune CR FB Insert Size 2 5mm	19
151620206	Attune CR FB Insert Size 2 6mm	8
151620207	Attune CR FB Insert Size 2 7mm	5
151620208	Attune CR FB Insert Size 2 8mm	5
151620210	Attune CR FB Insert Size 2 10mm	4
151620212	Attune CR FB Insert Size 2 12mm	3
151620305	Attune CR FB Insert Size 3 5mm	217
151620306	Attune CR FB Insert Size 3 6mm	155
151620307	Attune CR FB Insert Size 3 7mm	91
151620308	Attune CR FB Insert Size 3 8mm	67
151620310	Attune CR FB Insert Size 3 10mm	51
151620312	Attune CR FB Insert Size 3 12mm	15
151620314	Attune CR FB Insert Size 3 14mm	1
151620316	Attune CR FB Insert Size 3 16mm	2
151620405	Attune CR FB Insert Size 4 5mm	841
151620406	Attune CR FB Insert Size 4 6mm	653
151620407	Attune CR FB Insert Size 4 7mm	411
151620408	Attune CR FB Insert Size 4 8mm	278
151620410	Attune CR FB Insert Size 4 10mm	139
151620412	Attune CR FB Insert Size 4 12mm	43
151620414	Attune CR FB Insert Size 4 14mm	10
151620416	Attune CR FB Insert Size 4 16mm	5
151620505	Attune CR FB Insert Size 5 5mm	1585
151620506	Attune CR FB Insert Size 5 6mm	1144
151620507	Attune CR FB Insert Size 5 7mm	705
151620508	Attune CR FB Insert Size 5 8mm	510
151620510	Attune CR FB Insert Size 5 10mm	236
151620512	Attune CR FB Insert Size 5 12mm	52
151620514	Attune CR FB Insert Size 5 14mm	8
151620516	Attune CR FB Insert Size 5 16mm	6
151620605	Attune CR FB Insert Size 6 5mm	1574
151620606	Attune CR FB Insert Size 6 6mm	1119
151620607	Attune CR FB Insert Size 6 7mm	627
151620608	Attune CR FB Insert Size 6 8mm	503
151620610	Attune CR FB Insert Size 6 10mm	259
151620612	Attune CR FB Insert Size 6 12mm	64
151620614	Attune CR FB Insert Size 6 14mm	16
151620616	Attune CR FB Insert Size 6 16mm	1
151620705	Attune CR FB Insert Size 7 5mm	1320
151620706	Attune CR FB Insert Size 7 6mm	874
151620707	Attune CR FB Insert Size 7 7mm	539
151620708	Attune CR FB Insert Size 7 8mm	345
151620710	Attune CR FB Insert Size 7 10mm	204

Appendix A3: Bearing Components

Catalogue Number	Description	Number
151620712	Attune CR FB Insert Size 7 12mm	45
151620714	Attune CR FB Insert Size 7 14mm	3
151620716	Attune CR FB Insert Size 7 16mm	4
151620805	Attune CR FB Insert Size 8 5mm	810
151620806	Attune CR FB Insert Size 8 6mm	582
151620807	Attune CR FB Insert Size 8 7mm	358
151620808	Attune CR FB Insert Size 8 8mm	221
151620810	Attune CR FB Insert Size 8 10mm	113
151620812	Attune CR FB Insert Size 8 12mm	30
151620814	Attune CR FB Insert Size 8 14mm	4
151620816	Attune CR FB Insert Size 8 16mm	4
151620905	Attune CR FB Insert Size 9 5mm	186
151620906	Attune CR FB Insert Size 9 6mm	124
151620907	Attune CR FB Insert Size 9 7mm	74
151620908	Attune CR FB Insert Size 9 8mm	53
151620910	Attune CR FB Insert Size 9 10mm	26
151620912	Attune CR FB Insert Size 9 12mm	6
151621005	Attune CR FB Insert Size 10 5mm	36
151621006	Attune CR FB Insert Size 10 6mm	19
151621007	Attune CR FB Insert Size 10 7mm	11
151621008	Attune CR FB Insert Size 10 8mm	9
151621010	Attune CR FB Insert Size 10 10mm	2
151621012	Attune CR FB Insert Size 10 12mm	3
151630105	Attune CR RP Insert Size 1 5mm	1
151630305	Attune CR RP Insert Size 3 5mm	30
151630306	Attune CR RP Insert Size 3 6mm	20
151630307	Attune CR RP Insert Size 3 7mm	8
151630308	Attune CR RP Insert Size 3 8mm	10
151630312	Attune CR RP Insert Size 3 12mm	1
151630405	Attune CR RP Insert Size 4 5mm	91
151630406	Attune CR RP Insert Size 4 6mm	98
151630407	Attune CR RP Insert Size 4 7mm	93
151630408	Attune CR RP Insert Size 4 8mm	51
151630410	Attune CR RP Insert Size 4 10mm	25
151630412	Attune CR RP Insert Size 4 12mm	6
151630505	Attune CR RP Insert Size 5 5mm	184
151630506	Attune CR RP Insert Size 5 6mm	259
151630507	Attune CR RP Insert Size 5 7mm	177
151630508	Attune CR RP Insert Size 5 8mm	103
151630510	Attune CR RP Insert Size 5 10mm	51
151630512	Attune CR RP Insert Size 5 12mm	7
151630514	Attune CR RP Insert Size 5 14mm	1
151630605	Attune CR RP Insert Size 6 5mm	212
151630606	Attune CR RP Insert Size 6 6mm	279
151630607	Attune CR RP Insert Size 6 7mm	180
151630608	Attune CR RP Insert Size 6 8mm	129

Appendix A3: Bearing Components

Catalogue Number	Description	Number
151630610	Attune CR RP Insert Size 6 10mm	51
151630612	Attune CR RP Insert Size 6 12mm	8
151630614	Attune CR RP Insert Size 6 14mm	3
151630705	Attune CR RP Insert Size 7 5mm	155
151630706	Attune CR RP Insert Size 7 6mm	195
151630707	Attune CR RP Insert Size 7 7mm	178
151630708	Attune CR RP Insert Size 7 8mm	95
151630710	Attune CR RP Insert Size 7 10mm	36
151630712	Attune CR RP Insert Size 7 12mm	9
151630714	Attune CR RP Insert Size 7 14mm	1
151630805	Attune CR RP Insert Size 8 5mm	136
151630806	Attune CR RP Insert Size 8 6mm	139
151630807	Attune CR RP Insert Size 8 7mm	79
151630808	Attune CR RP Insert Size 8 8mm	72
151630810	Attune CR RP Insert Size 8 10mm	26
151630812	Attune CR RP Insert Size 8 12mm	3
151630905	Attune CR RP Insert Size 9 5mm	25
151630906	Attune CR RP Insert Size 9 6mm	32
151630907	Attune CR RP Insert Size 9 7mm	33
151630908	Attune CR RP Insert Size 9 8mm	20
151630910	Attune CR RP Insert Size 9 10mm	7
151630912	Attune CR RP Insert Size 9 12mm	1
151630914	Attune CR RP Insert Size 9 14mm	1
151631005	Attune CR RP Insert Size 10 5mm	4
151631006	Attune CR RP Insert Size 10 6mm	3
151631007	Attune CR RP Insert Size 10 7mm	3
151631008	Attune CR RP Insert Size 10 8mm	1
151640105	Attune PS FB Insert Size 1 5mm	1
151640107	Attune PS FB Insert Size 1 7mm	1
151640205	Attune PS FB Insert Size 2 5mm	4
151640206	Attune PS FB Insert Size 2 6mm	5
151640207	Attune PS FB Insert Size 2 7mm	1
151640208	Attune PS FB Insert Size 2 8mm	2
151640212	Attune PS FB Insert Size 2 12mm	2
151640305	Attune PS FB Insert Size 3 5mm	155
151640306	Attune PS FB Insert Size 3 6mm	107
151640307	Attune PS FB Insert Size 3 7mm	44
151640308	Attune PS FB Insert Size 3 8mm	39
151640310	Attune PS FB Insert Size 3 10mm	23
151640312	Attune PS FB Insert Size 3 12mm	8
151640314	Attune PS FB Insert Size 3 14mm	1
151640316	Attune PS FB Insert Size 3 16mm	1
151640320	Attune PS FB Insert Size 3 20mm	2
151640405	Attune PS FB Insert Size 4 5mm	629
151640406	Attune PS FB Insert Size 4 6mm	338
151640407	Attune PS FB Insert Size 4 7mm	202

Appendix A3: Bearing Components

Catalogue Number	Description	Number
151640408	Attune PS FB Insert Size 4 8mm	133
151640410	Attune PS FB Insert Size 4 10mm	63
151640412	Attune PS FB Insert Size 4 12mm	11
151640414	Attune PS FB Insert Size 4 14mm	11
151640505	Attune PS FB Insert Size 5 5mm	939
151640506	Attune PS FB Insert Size 5 6mm	628
151640507	Attune PS FB Insert Size 5 7mm	377
151640508	Attune PS FB Insert Size 5 8mm	255
151640510	Attune PS FB Insert Size 5 10mm	108
151640512	Attune PS FB Insert Size 5 12mm	28
151640514	Attune PS FB Insert Size 5 14mm	9
151640516	Attune PS FB Insert Size 5 16mm	4
151640605	Attune PS FB Insert Size 6 5mm	939
151640606	Attune PS FB Insert Size 6 6mm	604
151640607	Attune PS FB Insert Size 6 7mm	352
151640608	Attune PS FB Insert Size 6 8mm	222
151640610	Attune PS FB Insert Size 6 10mm	135
151640612	Attune PS FB Insert Size 6 12mm	40
151640614	Attune PS FB Insert Size 6 14mm	7
151640616	Attune PS FB Insert Size 6 16mm	1
151640705	Attune PS FB Insert Size 7 5mm	745
151640706	Attune PS FB Insert Size 7 6mm	505
151640707	Attune PS FB Insert Size 7 7mm	261
151640708	Attune PS FB Insert Size 7 8mm	186
151640710	Attune PS FB Insert Size 7 10mm	98
151640712	Attune PS FB Insert Size 7 12mm	26
151640714	Attune PS FB Insert Size 7 14mm	4
151640716	Attune PS FB Insert Size 7 16mm	1
151640718	Attune PS FB Insert Size 7 18mm	1
151640805	Attune PS FB Insert Size 8 5mm	437
151640806	Attune PS FB Insert Size 8 6mm	291
151640807	Attune PS FB Insert Size 8 7mm	163
151640808	Attune PS FB Insert Size 8 8mm	119
151640810	Attune PS FB Insert Size 8 10mm	56
151640812	Attune PS FB Insert Size 8 12mm	9
151640814	Attune PS FB Insert Size 8 14mm	5
151640816	Attune PS FB Insert Size 8 16mm	2
151640905	Attune PS FB Insert Size 9 5mm	102
151640906	Attune PS FB Insert Size 9 6mm	60
151640907	Attune PS FB Insert Size 9 7mm	29
151640908	Attune PS FB Insert Size 9 8mm	29
151640910	Attune PS FB Insert Size 9 10mm	11
151640912	Attune PS FB Insert Size 9 12mm	3
151640916	Attune PS FB Insert Size 9 16mm	1
151641005	Attune PS FB Insert Size 10 5mm	17
151641006	Attune PS FB Insert Size 10 6mm	21

Appendix A3: Bearing Components

Catalogue Number	Description	Number
151641007	Attune PS FB Insert Size 10 7mm	9
151641008	Attune PS FB Insert Size 10 8mm	5
151641010	Attune PS FB Insert Size 10 10mm	3
151641012	Attune PS FB Insert Size 10 12mm	1
151650305	Attune PS RP Insert Size 3 5mm	11
151650306	Attune PS RP Insert Size 3 6mm	13
151650307	Attune PS RP Insert Size 3 7mm	2
151650308	Attune PS RP Insert Size 3 8mm	3
151650310	Attune PS RP Insert Size 3 10mm	3
151650405	Attune PS RP Insert Size 4 5mm	24
151650406	Attune PS RP Insert Size 4 6mm	35
151650407	Attune PS RP Insert Size 4 7mm	19
151650408	Attune PS RP Insert Size 4 8mm	11
151650410	Attune PS RP Insert Size 4 10mm	5
151650412	Attune PS RP Insert Size 4 12mm	2
151650505	Attune PS RP Insert Size 5 5mm	78
151650506	Attune PS RP Insert Size 5 6mm	93
151650507	Attune PS RP Insert Size 5 7mm	58
151650508	Attune PS RP Insert Size 5 8mm	26
151650510	Attune PS RP Insert Size 5 10mm	12
151650605	Attune PS RP Insert Size 6 5mm	84
151650606	Attune PS RP Insert Size 6 6mm	99
151650607	Attune PS RP Insert Size 6 7mm	69
151650608	Attune PS RP Insert Size 6 8mm	35
151650610	Attune PS RP Insert Size 6 10mm	14
151650612	Attune PS RP Insert Size 6 12mm	5
151650705	Attune PS RP Insert Size 7 5mm	71
151650706	Attune PS RP Insert Size 7 6mm	100
151650707	Attune PS RP Insert Size 7 7mm	61
151650708	Attune PS RP Insert Size 7 8mm	43
151650710	Attune PS RP Insert Size 7 10mm	11
151650712	Attune PS RP Insert Size 7 12mm	1
151650805	Attune PS RP Insert Size 8 5mm	43
151650806	Attune PS RP Insert Size 8 6mm	54
151650807	Attune PS RP Insert Size 8 7mm	39
151650808	Attune PS RP Insert Size 8 8mm	24
151650810	Attune PS RP Insert Size 8 10mm	10
151650812	Attune PS RP Insert Size 8 12mm	5
151650905	Attune PS RP Insert Size 9 5mm	14
151650906	Attune PS RP Insert Size 9 6mm	10
151650907	Attune PS RP Insert Size 9 7mm	12
151650908	Attune PS RP Insert Size 9 8mm	5
151650910	Attune PS RP Insert Size 9 10mm	2
151651005	Attune PS RP Insert Size 10 5mm	3
151651006	Attune PS RP Insert Size 10 6mm	1
151651007	Attune PS RP Insert Size 10 7mm	2

Appendix A3: Bearing Components

Catalogue Number	Description	Number
151651008	Attune PS RP Insert Size 10 8mm	3
151710706	ATTUNE Revision CRS Rotating Platform Insert Size 7 6 mm AOX	1

Appendix A4: Patella Components

Catalogue Number	Description	Number
151810029	Attune Medialized Anatomic Patella 29mm	9
151810032	Attune Medialized Anatomic Patella 32mm	104
151810035	Attune Medialized Anatomic Patella 35mm	238
151810038	Attune Medialized Anatomic Patella 38mm	230
151810041	Attune Medialized Anatomic Patella 41mm	130
151820029	Attune Medialized Dome Patella 29mm	155
151820032	Attune Medialized Dome Patella 32mm	1395
151820035	Attune Medialized Dome Patella 35mm	4695
151820038	Attune Medialized Dome Patella 38mm	5330
151820041	Attune Medialized Dome Patella 41mm	3233
960100	PFC® SIGMA OVAL PATELLA 32mm	2
960101	PFC® SIGMA OVAL PATELLA 35mm	7
960102	PFC® SIGMA OVAL PATELLA 38mm	3
960103	PFC® SIGMA OVAL PATELLA 41mm	4